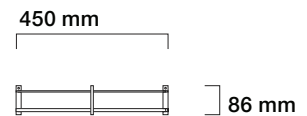


PARANS L1 SMALL

The L1 Luminaire spreads part of the light for a softer ambient light, while letting some of the light pass through in the shape of a square. It gives an abstract impression of a skylight and casts sunlight on the floor below, like sunlight flowing through a window.

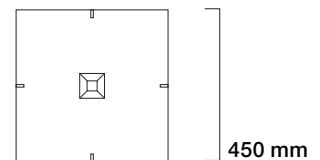
Parans L1 Small uses one fibre optical cable.

Model	Dimensions	Weight
Parans L1 Small	450 x 450 x 86 mm	3,6 kgs
Parans L1 Medium	450 x 900 x 86 mm	7,2 kgs



Materials

PMMA plastic	99,2 %
PC plastic	0,8 %



INSTALL THE L1 SMALL

Parans L1 can be suspended flush with the ceiling or pending down on wires. Depending on the ceiling material, different screws and plugs may be appropriate. Make sure that the luminaire is mounted securely!

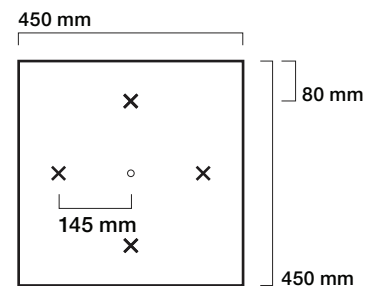
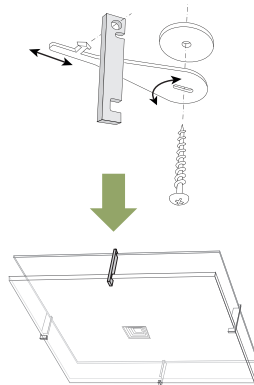
Place the Parans L1 at the intended position and mark out positions for the metal hangers and their screws, see drill guide below and on www.parans.com

Make the appropriate holes in the ceiling for the screws and plugs that have been selected.

Mount the metal hangers, complete with the plastic washers, as shown in the illustration. Note that the hooks have a smooth and a sharp side. The sharp side must be upwards so that the plastic hooks suspend the luminaire safely.

Attach the optical fibre cable to the hole in the luminaire back sheet (the thinner of the two sheets), securing it with a nut.

Hang the luminaire by rotating the metal hangers and pushing the arrow-shaped part of the metal hanger into the plastic hooks.



Attach metal hooks to ceiling according to this sketch.